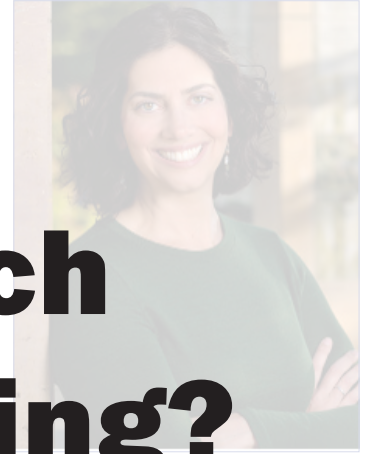


DEPARTMENTS OF MATHEMATICS & WILDLIFE
Lamberson Ecology Lecture Series



Why Are Monarch Butterflies Declining?

Dr. Elise Zipkin
Zipkin Quantitative Ecology Lab
Michigan State University

Zipkin Quantitative Ecology Lab develops statistical models to unravel some of the world's most alarming natural mysteries at the intersection of ecology, conservation biology, and the management of biodiversity. They study the status, trends and dynamics of populations and communities – insects, birds, amphibians, fish, reptiles, and mammals.

This is the “public” lecture part of the **Lamberson Ecology Lecture** series. It was made possible by retired Math Professor Roland Lamberson, who has made substantial contributions in the application of mathematics to ecology and natural resources. You're also invited to the afternoon “technical” talk: “**Solving Conservation Puzzles with Integrated Community Models**” at BSS#166 at 4:00 PM.

Apr. 18, 2024
THURSDAY

6:00 PM
WDFS#258

FOR MORE INFO GO TO <https://math.humboldt.edu/get-involved/lamberson-ecology-lecture>